

# TWIG Web Finder

## Free Introductory Service!

- For TWIG Discovery Pro and TWIG Locator (new GPRS versions)
- Easy to use web service enabling you to follow locations of your TWIG handsets and tracking devices internationally on a detailed street map display
- You can use the service from an Internet PC with web browser.



## GETTING STARTED IN THREE EASY STEPS:

### 1. Activate your free TWIG Web Finder account

(If you already have a TWIG Web Finder account, go directly to Step 2.)

Go to TWIG eShop at [www.twigworld.com](http://www.twigworld.com), select *The Shop*. Under *Subscriptions and credits*, buy *Free TWIG Web Finder Introductory Subscription for TWIG buyers*, priced at 0 euro.

During the checkout process, you need to fill in the required information for activating your account. You do not have to give any bank or PayPal information for this free of charge purchase. After completing all the steps, you will receive an E-mail with login information for your TWIG Web Finder account.

### 2. Prepare your TWIG device

In addition to your new TWIG device, you also need a GSM service subscription as well as SIM card with voice and GPRS data from your mobile operator. Take the TWIG device from sales box, insert the SIM card and battery and switch the device on. Next, configure communication settings to the TWIG device by using the provided PC tool (see below for detailed instructions for TWIG Locator and TWIG Discovery Pro).

The communication settings are delivered by your mobile operator:

- Phone number (MSID, e.g. "+358400123456")
- GPRS APN (e.g. "internet")
- GPRS DNS, GPRS User name, and GPRS Password (often left empty)

### 3. Link your TWIG device with your TWIG Web Finder account

Launch the TWIG Web Finder service. You can access the login screen from [www.twigworld.com](http://www.twigworld.com) > *The Services* > *Launch TWIG Internet Services*.

In TWIG Web Finder, add your new TWIG device to the service:

From menu, select *Device Management* > *Add Device*, and fill in the mobile phone number (without 00 or + in front of the country code), the IMEI code (from sales box or type label under battery), and the name by which you wish the TWIG to appear in your service account (e.g. MyPhone). Finally click *Add device*.

The TWIG device is now activated to work with TWIG Web Finder and you are ready to start using the service!

### 4. GPS and charging the battery

Devices using GPS need much power, so it is important to always charge the device before taking it into use. When not in use, switch off the device to save power.

When you have turned the TWIG device on, make sure it gets GPS position before taking it into use. Usually this means you need to go outdoors to open sky. Getting GPS position can take several minutes.

Due to GPS satellite system, getting GPS position can be difficult if there has been a longer period during which the device hasn't had an active GPS connection. This happens e.g. when getting position for the first time. You can help the acquisition by keeping the device stationary.

## USING TWIG WEB FINDER

Once your TWIG device is activated, you can start using it together with the TWIG Web Finder service.

### Locating TWIG mobiles

When you have made sure your TWIG device has GPS position, select it in the TWIG Web Finder My Friends list by checking its box.

Then click *Locate* and confirm locating the selected device. When the device is located, its refreshed position information appears on *Current selection* field.



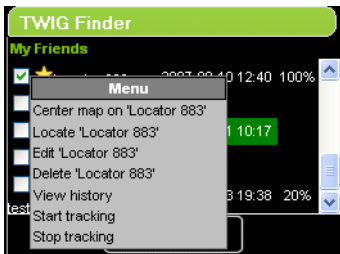


By clicking **Center Map** you will also see the most recent position of your device displayed on the map screen. You can zoom the map in and out, as well as measure distance by using the measure.

## Tracking TWIG mobiles

Right click on the TWIG device in My Friends list and select **Start Tracking**. Then set the desired tracking interval in minutes. The position of the TWIG device will now be continuously updated to TWIG Web Finder service.

Stop the tracking by right clicking on the device list and selecting **Stop Tracking**.



## Alert notification

By pressing and holding down the Alert button of your TWIG device, you can send a message to trigger an Alert notification on TWIG Web Finder screen (requires that the web application is running).

If you have activated alert forwarding in the TWIG Web Finder service, you will receive the alert notification also in your mobile phone and/or email.

## Alert voice call

In case of an alert, TWIG device can dial phone numbers to establish a voice call. The alert call is dialled to phone number(s) which are pre-defined in the TWIG device.

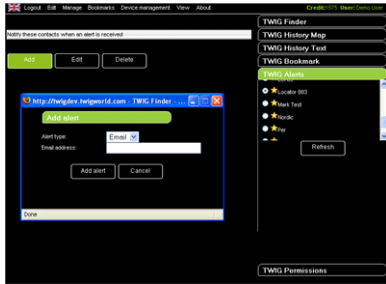
To activate this feature, use the provided PC configuration tool to configure the desired phone number(s) in your TWIG device.

## Alert forwarding

If alert forwarding is activated in your TWIG Web Finder account, the service forwards alerts to the specified email address, and/or GSM mobile as SMS messages. When receiving an alert message in your mobile phone or email, you can check the location of the alerting TWIG device in the TWIG Web Finder service.

To activate alert forwarding, click on **TWIG Alerts**, select the device for which you wish activate the feature from the device list, and add contact information in the field un-

derneath. Give the phone number without 00 or + in front of the country code.



## Map coverage

TWIG Web Finder street maps initially cover Western and Northern Europe, Russia, North America, Australia and South Africa. Please note that map coverage and map detail may vary from time to time and within regions and countries.

## Communication options

In TWIG Web Finder under *Device management > Edit device*, you can select for each TWIG mobile between using GPRS only (default) or allowing SMS to be sent to TWIG device when GPRS connection is not open. Allow-

ing SMS transmission may in some cases speed up communication but may also increase the cost of service (see below).

## Cost of using & How to pay

Each new TWIG device (new GPRS versions) comes with a free trial connection to TWIG Web Finder, plus an amount of free TWIG credits which are added to your account when the device is registered to the service.

TWIG credits on your account are automatically used for paying extension for the service for any TWIG devices on your account, as well as for sending SMS messages from your account.

The default communication method between TWIG server and TWIG devices is GPRS, so the only communication fees are those charged by your mobile operator. If you choose to send SMS messages from your TWIG Web Finder account, your TWIG credits are charged accordingly.

Please, visit TWIG eShop for the pricing of TWIG credits and how many credits are charged for extending the service for a TWIG device or sending a SMS message.

You can buy more credits to your TWIG Web Finder account from the TWIG eShop at any time.

## USING TWIG LOCATOR



### Preparing device


Insert SIM card and battery. Close the cover and tighten the screws with the provided hex tool. Charge the battery using the provided charger.

### Configuring communication settings / Using the PC Configuration Tool

Install Locator USB drivers from CD. Connect Locator to PC by using USB cable and open I2update.exe software. Select proper COM port and connect to Locator.

Read the EEPROM values from the device. Fill in your mobile operator's communication settings (see details overleaf) under **GPRS settings**. Finally, save the EEPROM settings to Locator.

### Turning on, indicator lights

Turn the device on by pressing the power button . As a sign of powering on, all three indicator lights turn on for a moment. Thereafter the indicator lights blink according to their status:

**GSM**: 1 blink/sequence when having a network

**GPS**: 1 blink/sequence, if the GPS has a valid position fix that is not older than 5 minutes

**GPS**: Continuously off, if previous position is older than 5 minutes and a new position fix is not available

### Acquiring GPS position

TWIG Locator GPS powers up directly whenever the device is powered up. Take the device outdoors to a place with clear view of the sky. You have a GPS position when **GPS** indicator light starts blinking. This can take several minutes.


## Alert function

By pressing the Alert button  for 3 seconds you send off a message triggering an Alert notification on TWIG Web Finder screen.

In case of an alert, The TWIG Locator can also dial phone numbers to establish a listen-in voice call. To activate this feature, configure the alert number(s) to be called in your TWIG device, using the provided PC Configuration Tool. Please note that the receiving party can listen to TWIG Locator, but cannot talk back.

## Anchor Mode

In the Anchor Mode, the TWIG Locator alerts you if it is moved outside a predefined radius of 250 meters. Applications for this feature include vehicle security and safety of children and other persons in need of supervision.


To activate the Anchor Mode push the button  for 5 seconds. As confirmation of activation, the 'Battery/Status' indicator light starts blinking in 3 seconds interval, simultaneously with the 'GSM' and 'GPS' indicators. Blinking GPS indicator light indicates that there is a GPS position and the Anchor Mode can be activated.

Note that if conditions to calculate GPS position are not suitable, it is also possible to get an alarm even when Locator is not moving. This is normal GPS behaviour and not a sign of malfunction. To verify the movement, it is recommended to request new position from Locator few minutes after the alarm.

If the object/person carrying the TWIG Locator moves outside the defined region, you will receive an alert notification to your TWIG Web Finder account.

The alert is forwarded to a GSM mobile as text message, and/or to an email address, if you have activated alert forwarding in your TWIG Web Finder account. Upon receiving an alert message to your mobile phone or email, you can check the location of the TWIG device in the TWIG Web Finder service.

## Power off

To turn TWIG Locator off push the button  for at least 3 seconds, until all three indicators blink.

## GPS and battery life

With default factory settings TWIG Locator searches GPS position every 5 minutes to save battery. In this mode the battery life is typically [20] hours. If Anchor Mode is activated, GPS position is updated every minute which reduces the battery operation time.

If you need maximum battery life, please configure GPS off using the provided PC Configuration Tool. The GPS will be automatically activated, if Alert button is pressed or if the device location is requested from TWIG Web Finder. In the power saving mode the TWIG Locator can be typically located even after one week. It is recommended to leave the GPS max search time to 5 minutes as otherwise it may be difficult or even impossible to get GPS location when moving.

For continuous operation in e.g. a vehicle, please connect TWIG Locator to external power source, using Vehicle Power Adapter [sales code YO3170] for 12-24 Volt dc systems, or the supplied Mains Charger [sales code ZE3005 (EU), ZE3006 (UK)] for 110-240 Volt ac systems. Consult your local value-added reseller or e.g. a qualified car electrician.

## USING TWIG DISCOVERY PRO



### Preparing device

Insert SIM card and battery. Close the battery cover. Charge the battery using the provided charger.

### Configuring communication settings

Install Twig Configurator. Create new GPRS Settings file. Fill in the mobile operator communication settings (see details overleaf). Save the file to PC and send it to phone and reboot phone. Note that the

phone must be on in normal idle mode during configuration.

### Turning on

Turn the device on by pressing the power key.

### Acquiring GPS position

TWIG Discovery Pro powers up with GPS off. Turn GPS on to **Full Power** from the **GPS** menu. Take the device outdoors to a place with clear view of the sky. You have a GPS position when GPS indicator turns green. This can take several minutes.

### Alert function

By pressing the top TWIG Alert button for [3] seconds you can send a message triggering an Alert notification on TWIG Web Finder screen.

In case of an alert, The TWIG Discovery Pro can also dial phone numbers to establish a voice call. To activate this feature, configure the desired alert phone number(s) in your TWIG device by using the provided TWIG Configurator PC tool.

### GPS and battery life

With GPS in **Full Power** TWIG Discovery Pro updates GPS position every second. In this mode the battery life is typically [16] hours or less, depending on the other usage of the device for talking, navigation etc.

If you need maximum battery life please set GPS to *off*. GPS will be automatically activated, if Alert button is pressed.

Note! TWIG Web Finder can locate a device with GPS off if Alert button is pressed and the device is in clear view of GPS satellites. Also location requests coming from authorized partners (e.g. partners which are configured to the device with PC configuration tool) cause GPS to turn on, and response message to be sent automatically.

## MORE INFORMATION

This is a quick guide for using TWIG devices with the TWIG Web Finder service. For more information, please refer to the user manuals provided on the CD, and [\*www.twigworld.com\*](http://www.twigworld.com).

Should you have any problems, please email to:

[\*support@twigworld.com\*](mailto:support@twigworld.com).

